

Classic Christmas Stockings

Add a traditional look to your mantel this holiday season with a classic Christmas stocking. This free tutorial shows how to make the stocking in three sizes -- both are roomy enough to hold lots of gifts! Plus, we've also included a pattern following the same basic steps to create your own decorative mittens. Choose designs and fabric that match the personality of each and every member of your family.

If watching videos is more your thing, check out our quick and helpful video tutorial on how to construct a classic stocking (scroll down to view).

Supplies

For the Large Stocking:

1/2 yard faux suede

1/2 yard print

cotton fabric

Medium weight

(2.5 - 3 ounce)

cutaway stabilizer



Finished size large stocking:

14" from cuff to heel

10 1/2" from heel to toe

8" opening

For the large stocking, I used the small size of the [Plant a Little Christmas Santa](#) design.

For the best fit, choose embroidery designs that are 5 3/4" x 9" or smaller.

Finished size small stocking:

11" from cuff to heel

8" from heel to toe

6" opening

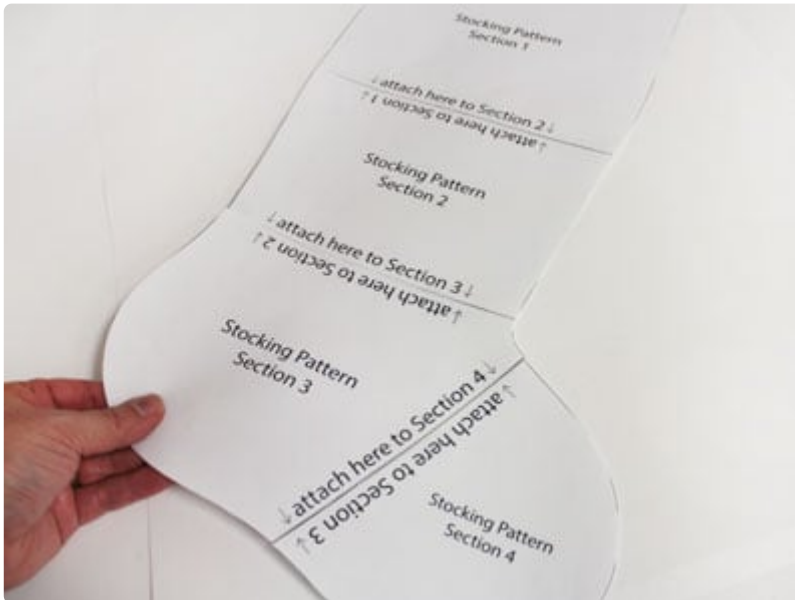
For the small stocking, I used the small size of the [Plant a Little Christmas Rudolph](#) design and the large size of the [Plant a Little Christmas Trowel](#) design.

For the best fit, choose embroidery designs that are 4 1/2" x 7" or smaller.

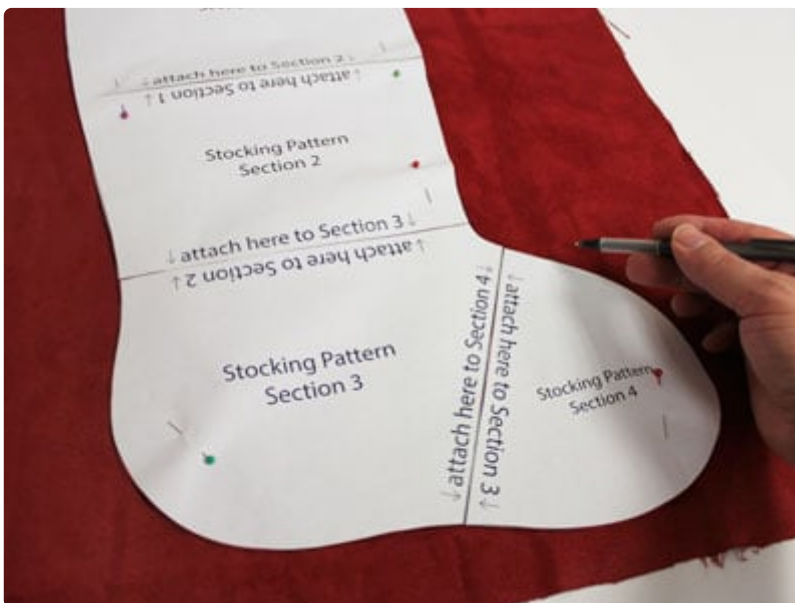
To get started, print the PDF of the pattern pieces. Use the above pattern link to download your PDF.

The patterns will print on four pieces of paper (8 1/2" x 11").

Steps To Complete



Cut out the pieces and tape them together.



Place the pattern piece on the faux suede; position it so the edges of the pattern are a couple of inches away from the edges of the fabric.

Pin the pattern piece in place and trace the shape.

Use embroidery software to open the design and print a template. Place the template on the fabric to determine where to stitch the design.

When positioning the template on the fabric, allow ample room for the cuff.



If making the large size stocking, leave 8 1/2" between the top edge of the design and the top edge of the stocking shape.

If making the small size stocking, leave 7 1/2" between the top of the design and the top of the stocking.

This space allows the cuff to be folded down later in the project.

Center the design between the sides. Allow at least 1" between the edges of the design and the edge of the stocking.

After the template is positioned, mark the center point and the vertical and horizontal axis lines.



Spray cutaway stabilizer with temporary adhesive, and smooth the fabric on top.

Hoop the fabric and stabilizer together. Align the marks on the fabric with the marks on the hoop.

Attach the hoop to the machine and load the design. Move the hoop so that the needle is aligned with the center point on the fabric. Embroider the design.



After embroidering, trim the excess stabilizer away from the back. Leave about 1/2" around the design.



Cut out the stocking shape.



Next, prepare the back piece.

Place the embroidered front piece on top of the back piece fabric, right sides together.

Pin in place, and cut out the stocking shape.

Sew a 1/2" seam along the side and bottom edges only. Leave the top edge open.



Clip the seam allowance around the curved edges about every 1/2". Use caution so that you do not cut through the seam.

Turn the fabric right side out and press the seams. Use a pressing cloth to avoid scorching the fabric.

Next, make the lining.

Use the PDF of the pattern piece to cut out two pieces of the cotton fabric.



Place the fabric right side up for the first piece, then flip the fabric to the wrong side to cut the second piece.

Align the pieces together, right sides together. Pin in place.

Sew a 1/2" seam along the side and bottom edges only. Clip the seam allowance along the curved edges as you did for the outer shell.



Slip the outer shell inside the inner lining, right sides together.

Align the top raw edges and seams together. Pin in place.

Sew a 1/2" seam along the top edge leaving about 3" open along the backside.



Turn the fabric right side out and insert the inner lining inside the outer shell.

Turn the fabric of the opening in 1/2", press, and pin in place.

Top stitch a 1/4" seam along the entire top edge of the stocking.

Turn the top edge of the stocking over (3 1/2" for the large stocking, and 2 1/2" for the small). Turn so that the inner lining shows to the outside. Then, press the folds.

To add a loop, cut a piece of fabric that is 2" wide and 9" long.

Fold the long raw edges in to meet in the center and press.



Align the long folded edges in to meet and press. Insert one end of the fabric in between the folds of the opposite end to form a loop.

Sew a 1/8" seam along the folded edges and along where the ends meet.

Pinch one end of the loop together and hand sew it in place at the back seam of the stocking along the top edge.



Not only are these stockings terrific for adorning your Christmas mantel, but they're a joy to give as gifts, too.

Add a design that fits the personality of your recipient, and fill with treats and gifts!